

cushion pack

packaging padding machines

CP 428 S3i 3 phase Operating Instructions – Start-up



**cp cushion pack
GmbH & Co. KG
Am Riedweg 9a
D - 88682 Salem**

Tel.: +49(0)7553-828500
Fax: +49(0)7553-828502
www.cushionpack.com
sales@cushionpack.com



w w w . c u s h i o n p a c k . c o m

CP 428 S3i 3Ph

Operating Instructions – Start-up

Application and Installation:

cushion pack CP 428 S3i is used to make packaging padding from new and used cardboard.

Installation location and application can be changed as required.

cushion pack CP 428 S3i must be protected against moisture and humidity.

Technical data:

CP 428 S3i 3Ph

Loading width – cardboard size	endless
Cutting width - padding	420 mm
inlet height	20 mm
Production output	6-9 m ³ /h
working height	890mm
Throughput rate	12/14 m/min
Motor capacity	3,0 KW 3Ph
Main voltage	400V/50-60cps
Noise Emission / no-load operating	61 dB(A)
Noise Emission / operating cycle	71 dB(A)
Dimensions H x W x D (mm)	1100x750x800
Weight	245 Kg

CP 428 S3i 3Ph

Operating Instructions – Start-up

Electrical connection – start up

Connection to 380/400 V / 50 Hz three-phase power current is required for operation of the CP 428 S3i 3Ph. The CP 428 S3i 3Ph has a 2m long cable with 16 A Cekon connector. "Slow" 16 A fuses have to be available on site.

Commissioning

Connect plug to mains. Before putting the machine into operation, switch on at main switch (7). Then the machine can be switched on with the rocker switch (3) – the operating lamp green is lit and the machine starts.

The cardboard material can now be inserted into the feed slot (8) and production of the packaging padding can begin.

After pressing the Emergency-Stop switch (1), to switch on again unlock the Emergency-Stop switch. Press the rocker switch (3) short to „R“ to restart (R=reset after pushed the Emergency switch or after over loading the machine). The operating lamp green is lit again. Then the machine can be switched on with the rocker switch (3) on Pos. I - the machine starts.

**Only press the Emergency Stop button in the event of danger -
do not use as an Off switch!**

To switch the machine off, place the rocker switch (3) and the main switch (7) in „0“ position.

The machine is then completely disconnected from the mains!

When the CP 428 S2i is not in use, the main switch (7) must be switched off and prevented from being switched on again where necessary.

If too thick cardboard is fed in, switch the machine off immediately at the rocker switch (3) (push up to position „0“) . Then briefly put rocker switch (3) in position „R“ (reverse), switch machine off again and the too thick cardboard can now be removed from the machine.

Disconnect the mains plug before opening the housing!

Padding flap - rear

The flap attached at the rear is pressed by two springs (10) onto the outlet and press channel to compress the cardboard material in the channel.

This is necessary to obtain padded material!

When you want to obtain flat mats, you have to unhook the two springs on the right and the left (10) to eliminate the padding effect.

Caution

**the padded material must always fall unobstructed out of the outlet channel.
Do not block the channel.**

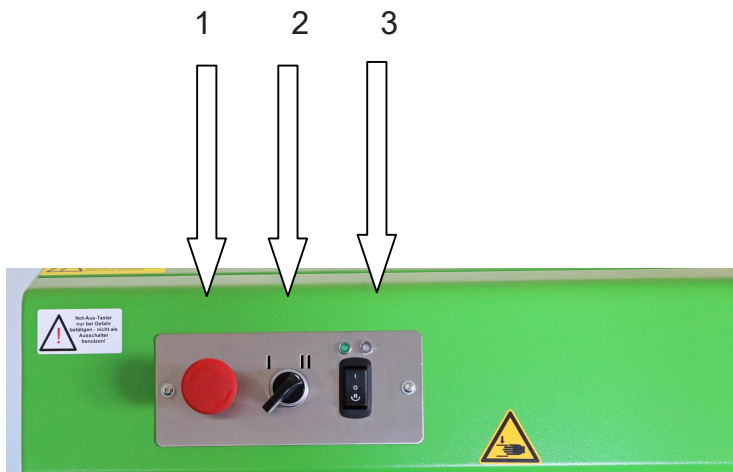
cushion pack

packaging padding machines

CP 428 S3i 3ph Operating Instructions – Start-up



built-in dust
extraction
device



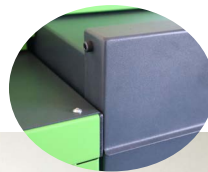
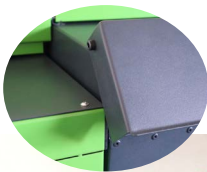
(2) speed control
Pos.I slowly: for stonger cardboards
Pos.II Standard

LED I lights up green:
Power machine is on ready for operation,

LED II lights up green:
Run - machine is running

LED II lights up red: Error - machine over
Briefly restart the rocker switch (3) to R (reset/
reverse).

- Emergency switch (1) unlock/check



CP 428 S3i 3Ph Operating Instructions – Start-up

Important Operating Instructions



The package padding machine may be fed only with material such as corrugated cardboard or other boxes as well as paper of 60 g/m² or more.

Do not feed the machine with a cardboard thickness that is more than is specified in the technical data.

The feeding of other materials can result in injury to the operating personnel, e.g., splinters when inserting hard materials.



Hard materials can also lead to damage to the machine and the destruction of the cutting blades.

Used cardboard that is fed folded into the machine can also contain screws or similar hard materials that must be removed in all cases.



Always unfold the closing flaps of the used cardboard boxes also to the outside so that metal parts that could damage the cutter blades do not remain caught in the folds.

Single staples cannot cause damage to the cutting mechanism ! However, danger of injury exists when cut off staples are caught in the package padding !

Recommendation !
Always remove the stapled edge !

CP 428 S3i 3Ph

Operating Instructions – Start-up

Installation – safety rules

CP 428 S3i has been built according to the safety rules for shredding machines (DIN 31001) and according to the EC Machine Directive 98/37/EG and 91 / 368/ EWG/2006/42/EG and EMV-Richtline / EWG89/336-91/263/EMV and 92/31/EMV.

CP 428 S3i must be installed so as to prevent potential hazards for persons. The installation next to ramps or other elevated spaces is not allowed.

CP 428 S3i may be operated and serviced only by technically competent persons. The familiarisation with the Operating Instructions is part of the instruction. The Operating Instructions must be available and complied with.

Keep long hair, loose clothes, ties, scarves, etc. away from the inlet area of the cardboard inlet opening.

Defects and malfunctions of the CP 428 S3i which endanger the safety of the employees must be immediately repaired. The machine must be put out of operation until these hazards have been eliminated.

Maintenance and service

The CP 428 S3i must be checked at least once a year by an authorised person. The existence, quality and perfect function of all safety devices must be checked in intervals of two or three months for wear of moving parts and correct function of the complete electrical system.

Open cover to clean machine (pull mains connector)

Oil cutting rollers from time to time while machine is running . (Use oil spray with extension rod.).

Spray oil spray through the inlet slot (1) on the cutting rollers.

CP 428 S3i 3Ph Operating Instructions – Start-up

Important Safety Notes

The package padding machine may not be operated by several persons at the same time !



All safety elements are designed for safe operation by one person.

Children are not allowed to be in the working area of the operationally ready machine!

The safety distance to the feed opening, the emergency-off switch, etc. are designed for safe operation by adults.



Long hair, loose pieces of clothing, neckties, jewellery, scarves or other loose objects are to be kept away from the collecting area of the feed opening. Danger of injury !

Do not reach into the feed open with the fingers when the machine is running ! Danger of injury !

In case of danger, switch off the machine with the main switch or the emergency-off switch. Pull the mains plug immediately.



Before opening the housing for cleaning, for example, the machine is to be disconnected from the power source.

Pull the mains plug !

Repairs may be performed only by a specialist.

CP 428 S3i 3Ph Operating Instructions – Start-up

Important Maintenance and Cleaning Instructions



Before opening the housing, for example, for cleaning and maintenance work, the machine is always first to be disconnected from the mains.

Pull the mains plug !

Maintenance and Cleaning of the Cutting Mechanism
The gears and the drive chain must be cleaned and greased monthly.



Proceed as follows:

1. Open the hood. Remove two screws.
2. Remove the left side cover on the housing
3. With a vacuum cleaner, vacuum the cutting duct and dirt. Clean the chain and gears (with compressed air, if necessary).
4. After the cleaning is completed, apply grease with a brush or grease gun to the gears and the drive chain.
5. The left and right of the cutting mechanism - where the cutter shaft is held by the bearing - are to be sprayed with oil on the bearing plates and the cutting blades.
6. Close and firmly screw on the hood and the side cover.



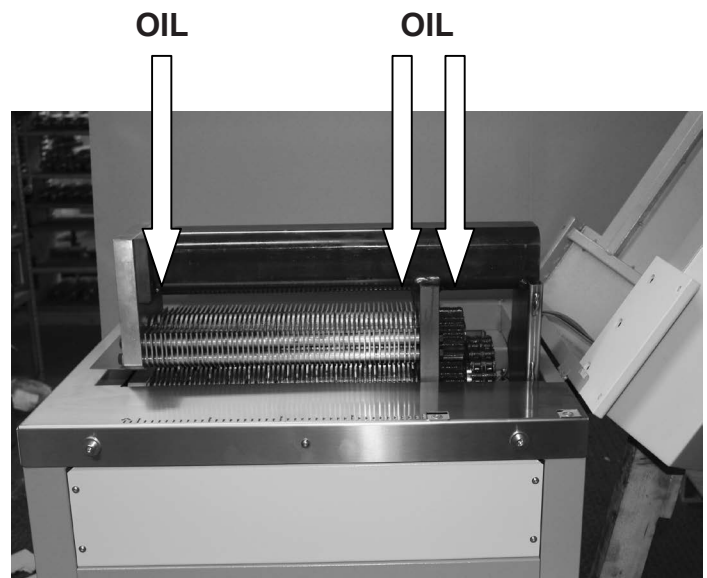
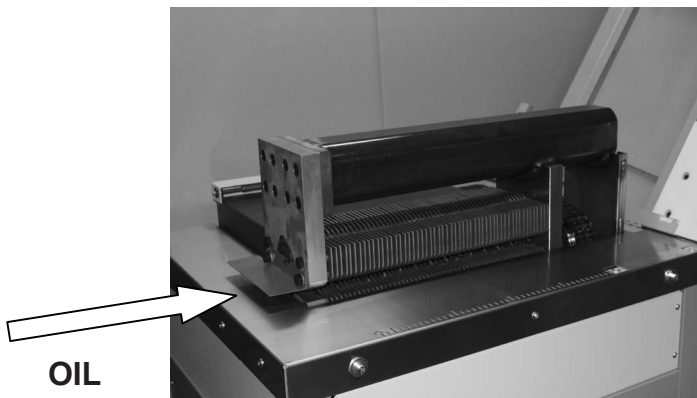
Repairs may be performed only by a speci!

cushion pack

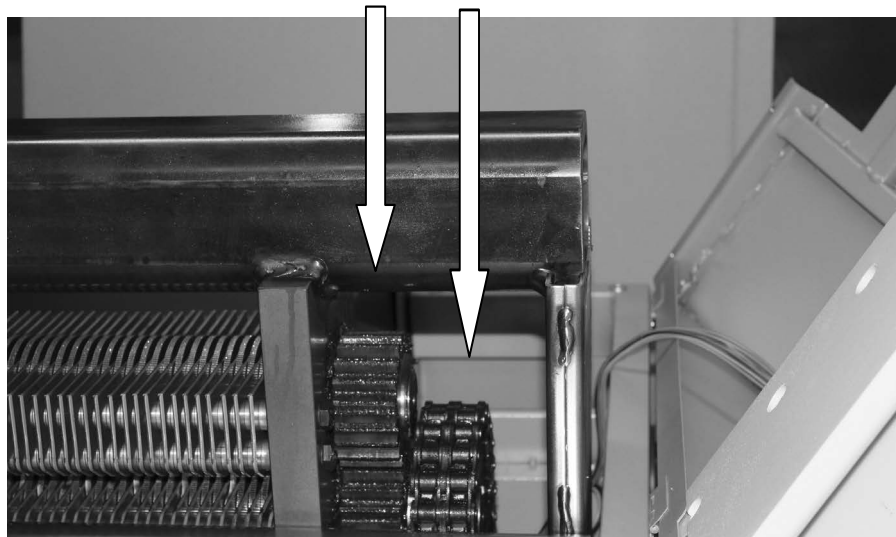
packaging padding machines

CP 428 S3i 3Ph Operating Instructions – Start-up

lubrication

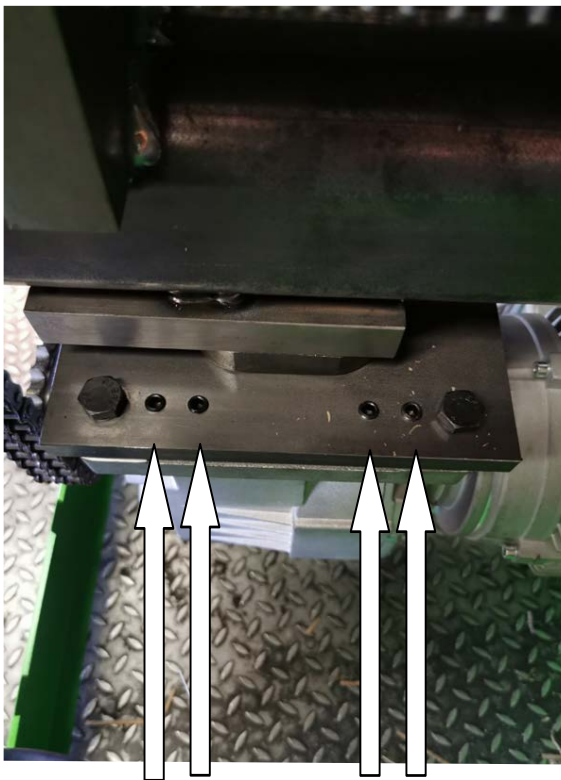


Fett
Grease OIL/Chain spray



CP 428 S3i 3Ph Operating Instructions – Start-up

Chain tension



The tension of the chain can be adjusted with the 8 threaded pins M10

1. Loosen the 4 engine mounting screws
2. Adjust the tension on the 8 threaded pins
3. Retighten the 4 screws of the motor attachment

CP 428 S3i 3Ph Operating Instructions – Start-up

EG - Konformitätserklärung Certificate of Conformity

Der Hersteller

cp cushion pack
GmbH & Co. KG
Am Riedweg 9a
D - 88682 Salem



erklärt hiermit, daß nachstehend beschriebene Maschine:

cushion pack CP 428 S3i

übereinstimmt mit den Bestimmungen folgender EG - Richtlinien:

Maschinenrichtlinie 2006/42/EG

EMV-Richtlinie / EWG89/336-91/263/EMV, 92/31/EMV und 2014/35/EU

Das oben genannte Gerät entspricht folgenden Normen bzw. Richtlinien:

We do Hereby certify that the above mentioned product meets the requirements set forth in EEC-Guidelines 2006/42/EG

EMV-Guidelines / EWG89/336-91/263/EMV, 92/31/EMV and 2014/35/EU

the above mentioned product meets the following standards and guidelines:

DIN EN ISO 13857, Ausgabe / dated 2008

EN 1088 Ausgabe / dated 1996

EN 0113-3 Ausgabe / dated 06-2007

EN 60204-1 Ausgabe / dated 1997/1998

EN 55011 Ausgabe / dated 1997

EN 61000-4-2/-5 Ausgabe / dated 1995/98

EMV 50140 (IEC 1000-4-2/-4) Ausgabe / dated 1993

Salem, den 10.10.2023

cp cushion pack
GmbH & Co. KG

Friederike Hack